

HOW TO USE BORLAND INTERBASE?

- **Client/Server architecture** (pages 685-691)

- Server Duties:
 - * Verify the Client (Authorization)
 - * Syntax Verification
 - * Symantex verification
 - * Return data / error message
 - * Data management
- Client duties:
 - * Accept user interface
 - * Verify the Server and sent request
 - * Receive data / error message
 - * Display to the user

- **How to run Interbase?**

Menu Windows: Start → Interbase → IBConsole

- **How to log into the local server?**

The first thing to do is to login to the local server.

Login name: SYSDBA (Login as a Database administrator)

Password: masterkey

- **How to create a database?**

Then you have to create a database which characterizes the world you consider and which contains all your tables and other data - metadata.

Menu IBConsole: Database → Create Database

Example: Creation of a database cs387.

Menu IBConsole: Database → Create Database alias cs387 (name of the database), files (cs387). A file cs387.gdb is created on your disk.

- **How to connect to a database?**

Menu IBConsole: Database → Connect - name of the database

When you connect to a database, different data become available (See Figure 1).

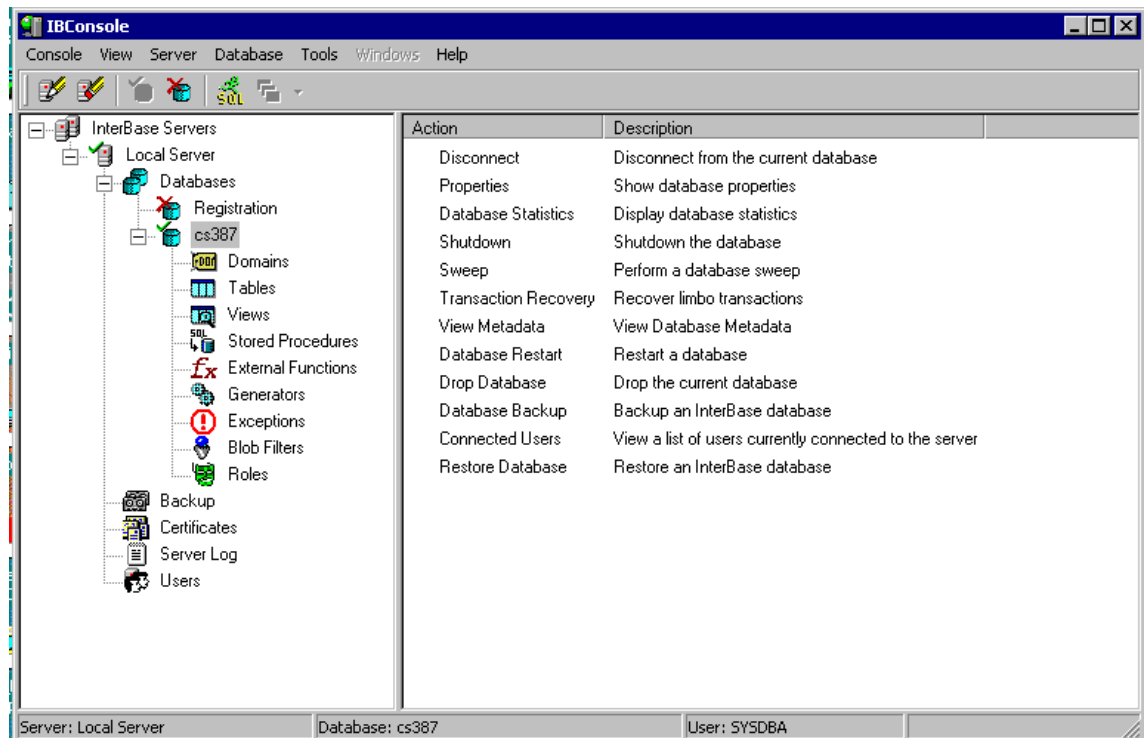


Figure 1

The different data are the following:

- **Domains:** domains names - You can create your own domains.
- **Tables:** tables names

For example, in the database cs387, there are some tables in all the databases: RDB\$X tables and the tables created by the user. RDB\$X tables describe the data (the database, the tables, the fields of the tables, the types of the fields of the tables... of the current database) (See Figure 2). They contains metadata. We refer to these data as **data dictionary** or **system catalog** which can be used for queries in the same way as user-defined tables (pages 426-428).

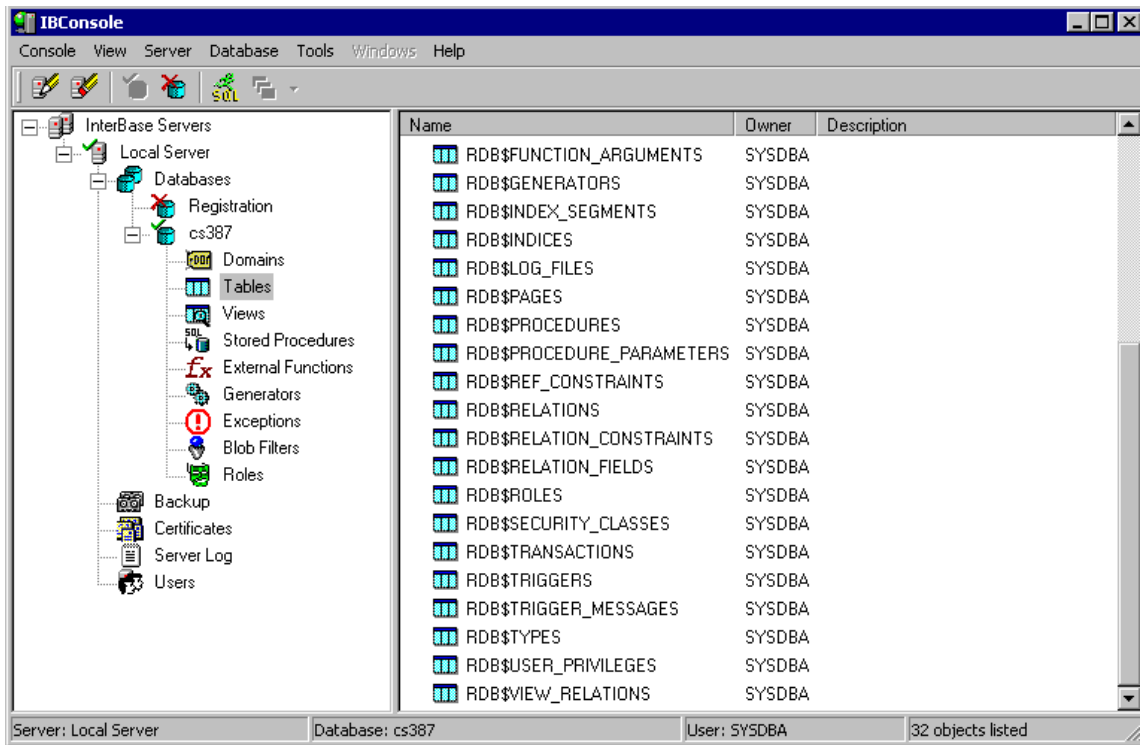


Figure 2

You can see the fields of a table by clicking on the table name. On Figure 3, you see the fields of the table RDB\$RELATIONS.

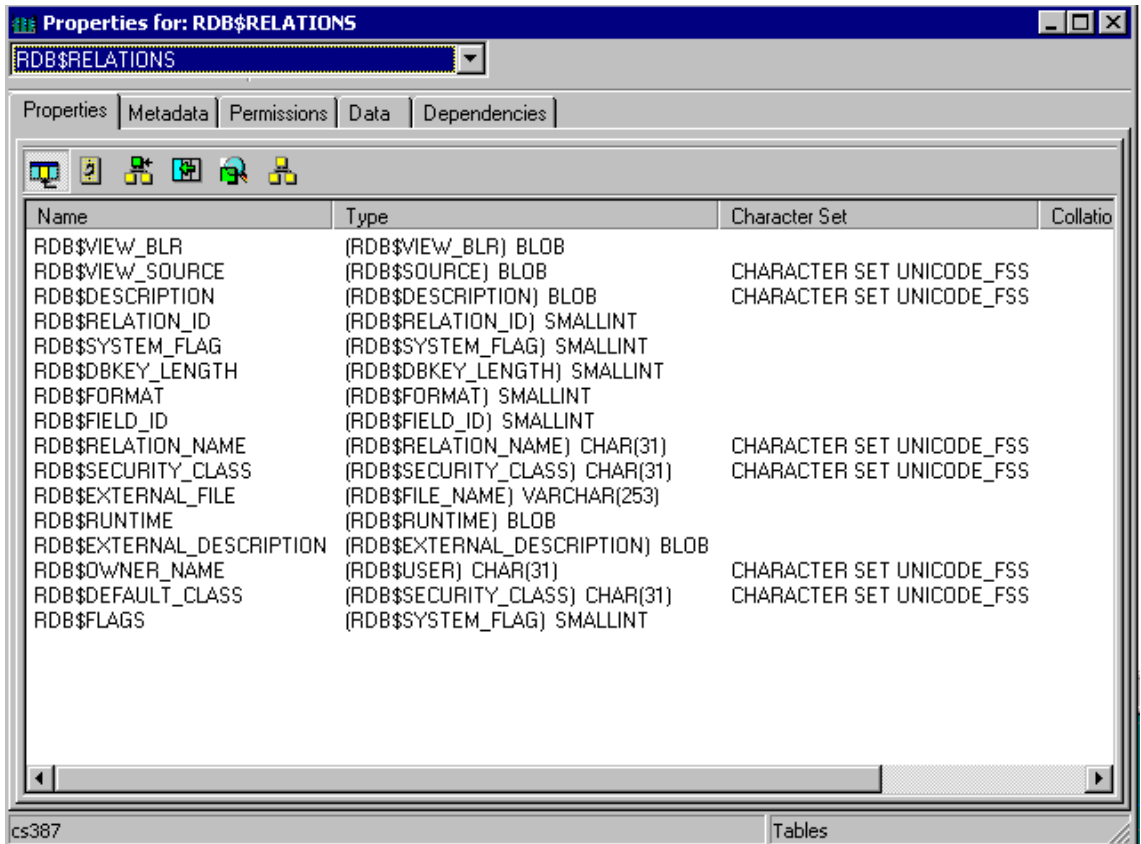


Figure 3

- Views
- Sorted procedures
- External Functions
- Generators
- Blob Filters
- Roles

- **How to write SQL queries?**

Menu IBConsole: Tools → Interactive SQL

For help on SQL, look in the Help of the Interactive SQL window. There is a Interbase SQL reference guide.

You write your query in the upper window of the Interactive SQL window (See Figure 4).

- **How to execute a query?**

Menu Interactive SQL: Query → Execute

The result will appear in the lower window of the Interactive SQL window (See Figure 4). Figure 4 shows the tables names of the database cs387.

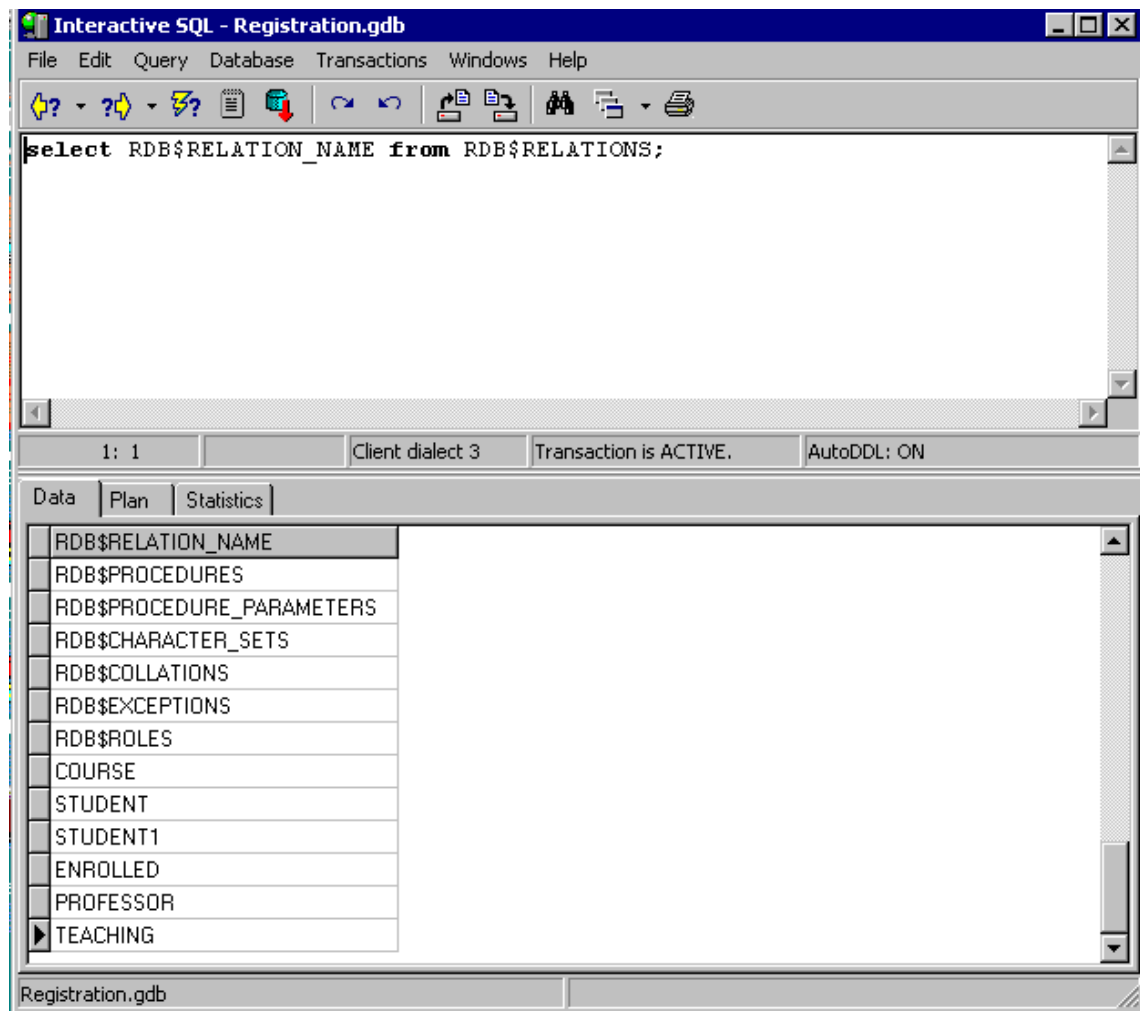


Figure 4